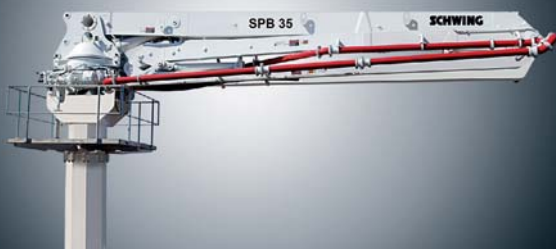


STATIONARY CONCRETE PUMPS SEPARATE PLACING BOOMS

Overview



CONTENTS

STATIONARY CONCRETE PUMPS

06 | 07 SP 305

08 | 09 SP 500

10 | 11 SP 750

12 | 13 SP 1400

14 | 15 SP 1800

16 | 17 SP 2800

18 | 19 SP 3800

20 | 21 SP 4800

22 | 23 SP 8800

SEPARATE PLACING BOOMS

24 | 25 SBP 28

26 | 27 SBP 30

28 | 29 SBP 35





CONCRETE BATCHING PLANTS



TRUCK MIXERS



TRUCK-MOUNTED CONCRETE PUMPS



STATIONARY CONCRETE PUMPS



SEPARATE PLACING BOOMS



CONCRETE RECYCLERS

SCHWING-STETTER MOVES CONCRETE. **WORLDWIDE.**

Wherever concrete is produced and moved is where you will find Schwing-Stetter machinery.

With plants in Germany, Austria, USA, Brazil, Russia, China and India as well as with more than 100 sales and service facilities, the group of companies is always close to the customer.

Our wide range of products with something for every application is what makes Schwing-Stetter the No. 1 system supplier for concrete machinery worldwide.



TECHNICAL DATA

| | | SP 305 |
|--------------------|-------------------|-------------|
| Type | | D-125 x 750 |
| Performance | | |
| Output | m ³ /h | 23 |
| Pressure | bar | 43 |
| Strokes | /min | 40 |
| Installed output | kW | 35 |
| Weight, approx. | kg | 1,525 |

*Performance data is max. theoretical
(Max. output and max. pressure cannot be achieved simultaneously.)*



TECHNICAL DATA

| | | SP 500 |
|--------------------|-------------------|--------------|
| Type | | D-150 x 1000 |
| Performance | | |
| Output | m ³ /h | 35 |
| Pressure | bar | 76 |
| Strokes | /min | 32 |
| Installed output | kW | 54 |
| Weight, approx. | kg | 2,270 |

*Performance data is max. theoretical
(Max. output and max. pressure cannot be achieved simultaneously.)*



TECHNICAL DATA

| | | SP 750 | |
|------------------|-------------------|--------------|--------------|
| Type | | D-180 x 1000 | D-150 x 1000 |
| Performance | | | |
| Output | m ³ /h | 54 | 38 |
| Pressure | bar | 76 | 76 |
| Strokes | /min | 35 | 35 |
| Installed output | kW | 75 | 75 |
| Weight, approx. | kg | 3,340 | 3,160 |

*Performance data is max. theoretical
(Max. output and max. pressure cannot be achieved simultaneously.)*

**TECHNICAL DATA**

| | | SP 1400 |
|--------------------|-------------------|--------------|
| Type | | D-180 x 1400 |
| Performance | | S / K |
| Output | m ³ /h | 52 / 34 |
| Pressure | bar | 63 / 99 |
| Strokes | /min | 24 / 16 |
| Installed output | kW | 75 |
| Weight, approx. | kg | 3,600 |

S = rod sided, K = piston sided

*Performance data is max. theoretical
(Max. output and max. pressure cannot be achieved simultaneously.)*



TECHNICAL DATA

| | | SP 1800 | |
|------------------|-------------------|--------------|--------------|
| Type | | D-200 x 1600 | E-200 x 1600 |
| Performance | | S / K | S / K |
| Output | m ³ /h | 73 / 42 | 73 / 42 |
| Pressure | bar | 60 / 108 | 60 / 108 |
| Strokes | /min | 24 / 14 | 24 / 14 |
| Installed output | kW | 74 / 126 | 75 / 90 |
| Weight, approx. | kg | 4,000 | 4,000 |

S = rod sided, K = piston sided

*Performance data is max. theoretical
(Max. output and max. pressure cannot be achieved simultaneously.)*



TECHNICAL DATA

| | | SP 2800 | |
|------------------|-------------------|--------------|--------------|
| Type | | D-200 x 1600 | E-200 x 1600 |
| Performance | | S / K | S / K |
| Output | m ³ /h | 101 / 58 | 101 / 58 |
| Pressure | bar | 60 / 108 | 60 / 108 |
| Strokes | /min | 33 / 19 | 33 / 19 |
| Installed output | kW | 129 | 110 / 132 |
| Weight, approx. | kg | 5,000 | 5,000 |

S = rod sided, K = piston sided

*Performance data is max. theoretical
(Max. output and max. pressure cannot be achieved simultaneously.)*



TECHNICAL DATA

| | | SP 3800 | | | |
|------------------|-------------------|--------------|--------------|--------------|--------------|
| Type | | D-200 x 2000 | E-200 x 2000 | D-180 x 2000 | E-180 x 2000 |
| Performance | | S/K | S/K | S/K | S/K |
| Output | m ³ /h | 95/58 | 95/58 | 78/48 | 78/48 |
| Pressure | bar | 81/137 | 81/137 | 100/169 | 100/169 |
| Strokes | /min | 26/16 | 26/16 | 26/16 | 26/16 |
| Installed output | kW | 190 | 160 | 190 | 160 |
| Weight, approx. | kg | 7,000 | 7,000 | 7,000 | 7,000 |

S = rod sided, K = piston sided

Performance data is max. theoretical

(Max. output and max. pressure cannot be achieved simultaneously.)



TECHNICAL DATA

| | | SP 4800 | | |
|------------------|-------------------|--------------|--------------|--------------|
| Type | | D-200 x 2000 | D-180 x 2000 | E-180 x 2000 |
| Performance | | S/K | S/K | S/K |
| Output | m ³ /h | 81 / 53 | 66 / 43 | 66 / 43 |
| Pressure | bar | 104 / 163 | 156 / 243 | 156 / 243 |
| Strokes | /min | 21 / 14 | 21 / 14 | 21 / 14 |
| Installed output | kW | 330 | 330 | 200 |
| Weight, approx. | kg | 8,000 | 8,000 | 8,000 |

S = rod sided, K = piston sided

*Performance data is max. theoretical
(Max. output and max. pressure cannot be achieved simultaneously.)*



TECHNICAL DATA

| | | SP 8800 | | |
|------------------|-------------------|--------------|--------------|--------------|
| Type | | D-200 x 2000 | D-180 x 2000 | E-180 x 2000 |
| Performance | | S/K | S/K | S/K |
| Output | m ³ /h | 116 / 77 | 94 / 63 | 91 / 60 |
| Pressure | bar | 104 / 163 | 156 / 243 | 156 / 243 |
| Strokes | /min | 31 / 21 | 31 / 21 | 30 / 20 |
| Installed output | kW | 440 | 440 | 2 x 200 |
| Weight, approx. | kg | 10,000 | 10,000 | 10,000 |

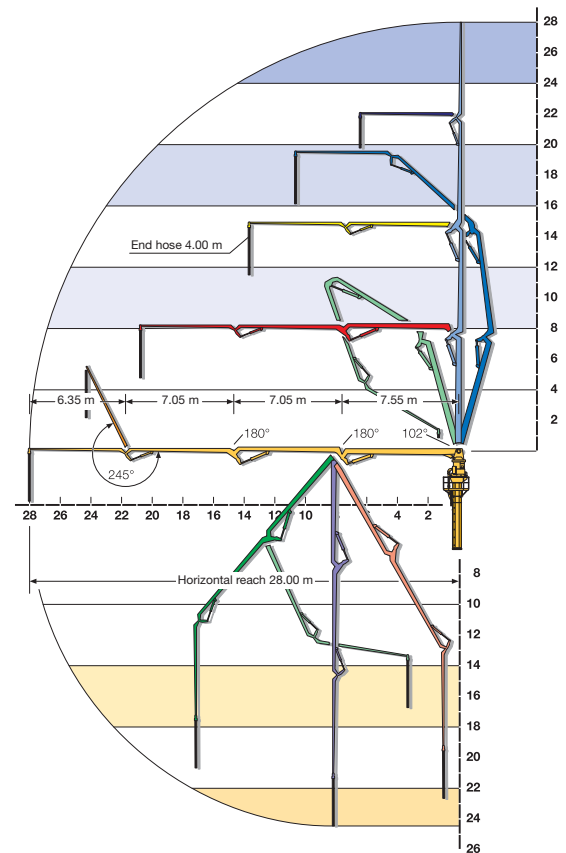
S = rod sided, K = piston sided

*Performance data is max. theoretical
(Max. output and max. pressure cannot be achieved simultaneously.)*



TECHNICAL DATA

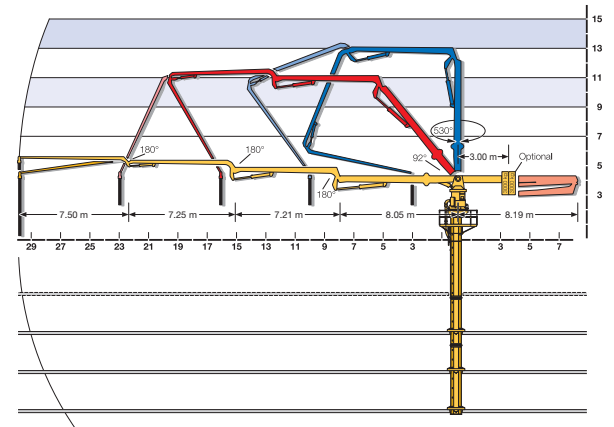
| Type | SPB 28 | |
|--|--------|-------|
| Horizontal reach | m | 28 |
| Number of arms | | 4 |
| Pipeline dia. | DN | 125 |
| End hose | m | 4 |
| Weight | kg | 6,600 |
| Optional split boom | | yes |
| Optional counterweight | kg | 6,000 |
| max. free-standing height on octo-column (w.o. c/wt) | m | 20 |





TECHNICAL DATA

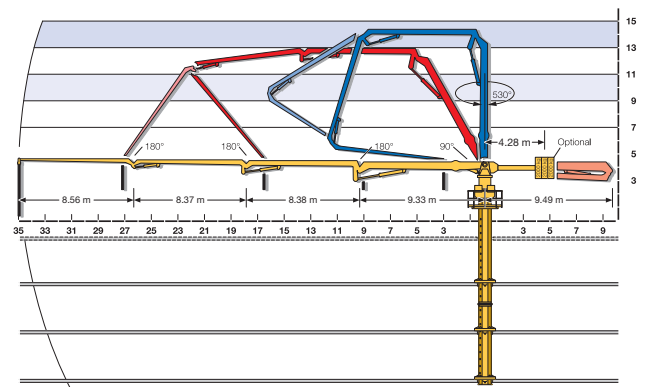
| Type | SPB 30 | |
|--|--------|-------|
| Horizontal reach | m | 30 |
| Number of arms | | 4 |
| Pipeline dia. | DN | 125 |
| End hose | m | 4 |
| Weight | kg | 6,700 |
| Optional split boom | | yes |
| Optional counterweight | kg | 6,000 |
| max. free-standing height on octo-column (w.o. c/wt) | m | 20 |

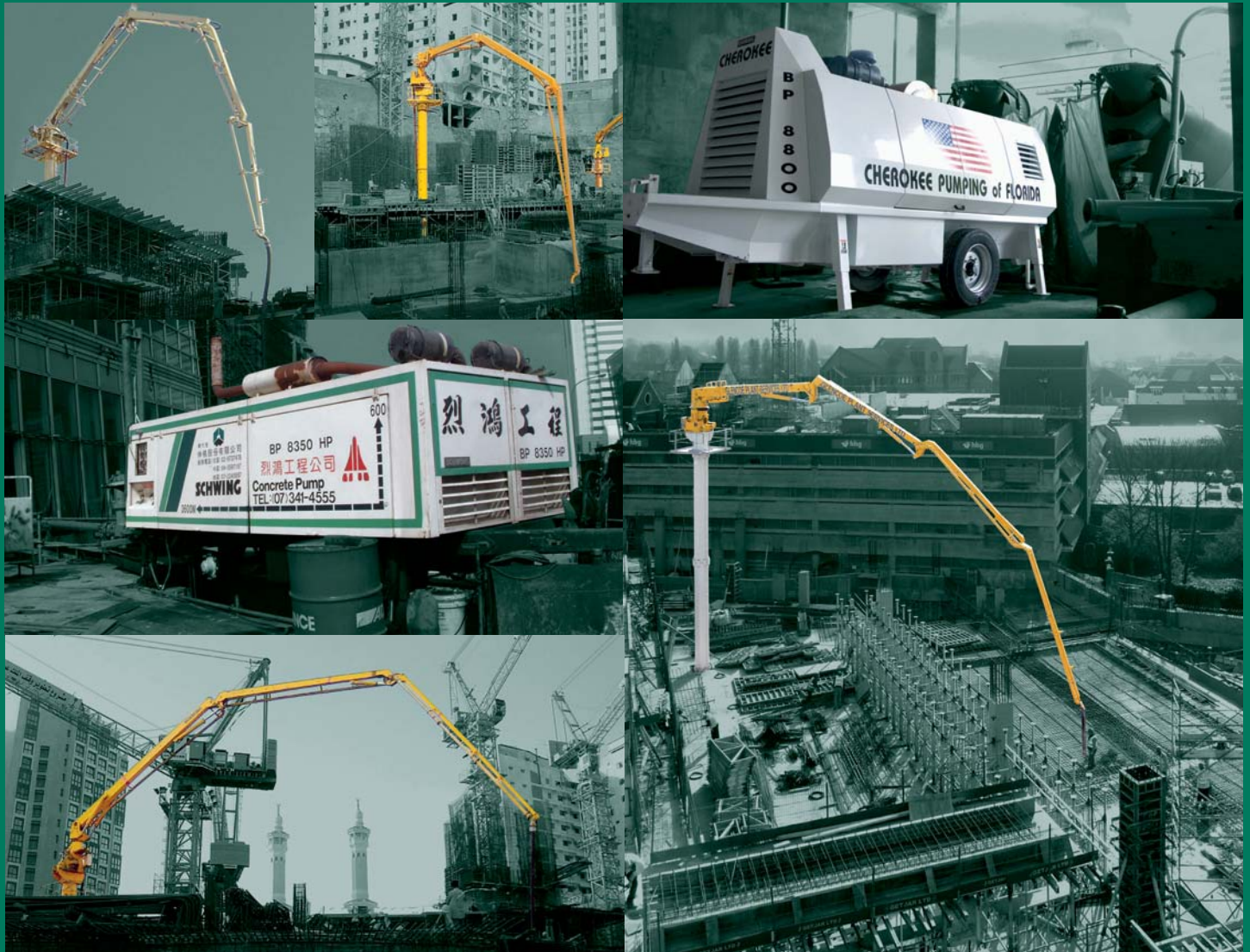




TECHNICAL DATA

| Type | SPB 35 | |
|--|--------|-------|
| Horizontal reach | m | 35 |
| Number of arms | | 4 |
| Pipeline dia. | DN | 125 |
| End hose | m | 4 |
| Weight | kg | 8,000 |
| Optional split boom | | yes |
| Optional counterweight | kg | 6,000 |
| max. free-standing height on octo-column (w.o. c/wt) | m | 14 |







SCHWING

SCHWING GmbH | Heerstraße 9-27 | 44653 Herne | T 02325 987-0 | F 02325 72992 | info@schwing.de | www.schwing.de